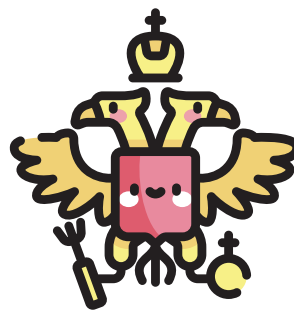
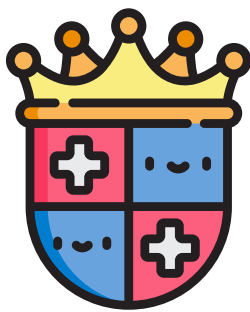
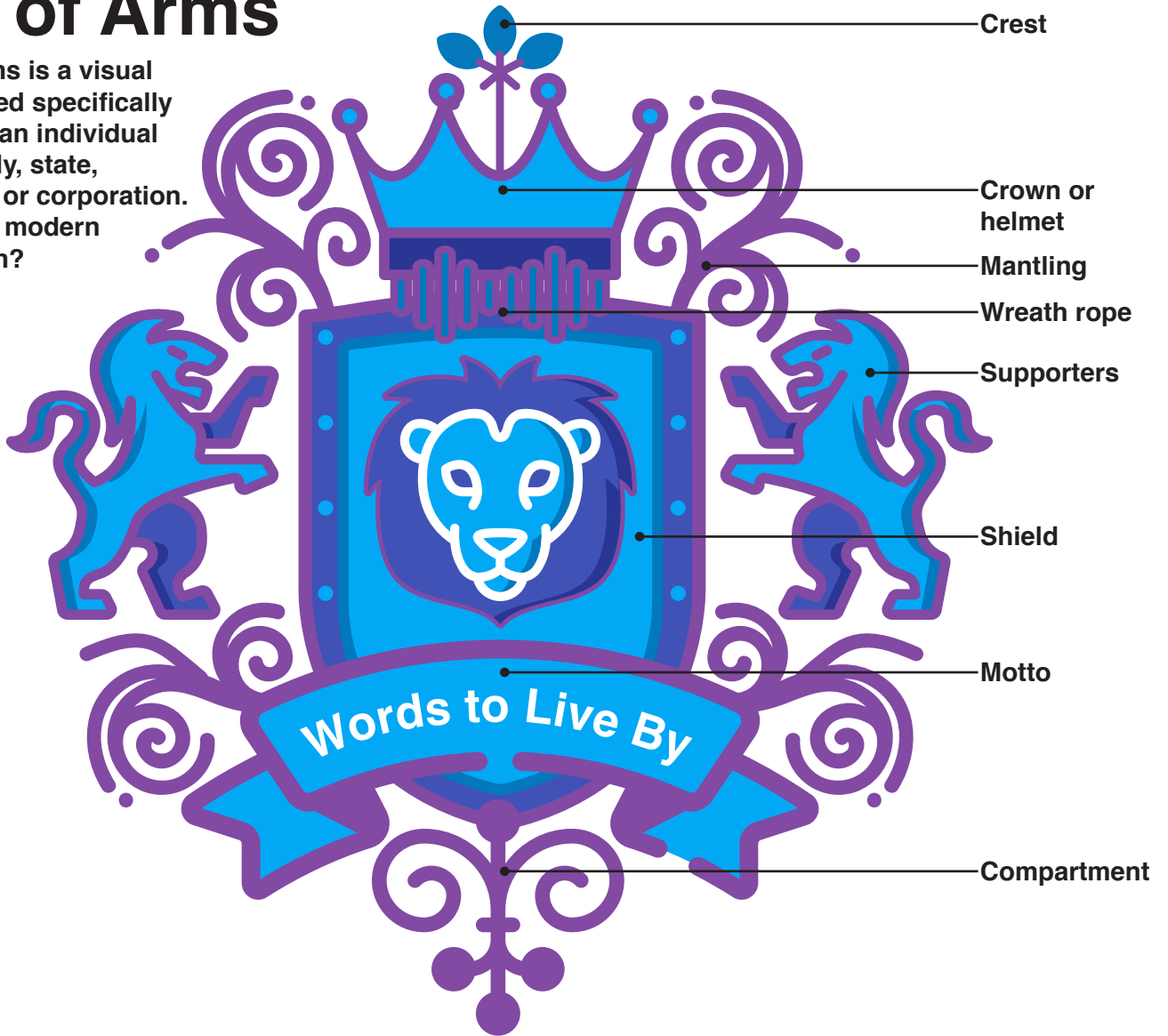


Coat of Arms

A coat of arms is a visual design created specifically to represent an individual person, family, state, organization or corporation. What is your modern interpretation?

COMMON PARTS





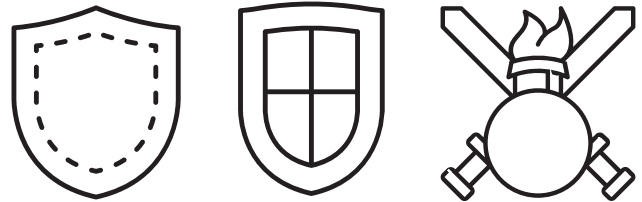
Coat of Arms

WHAT IS IT?

Developed in northern Europe in the mid-12th century, coats of arms served the purpose of identifying power holders. Traditionally, a coat of arms is a symbol used to identify an individual, family, state, organization or corporation. More recently, you may have seen coats of arms in the HBO Series Game of Thrones. The details on a coat of arms tell a viewer about the family or individual it belongs to. The design includes a shield, crest, crown or helmet, wreath, supporters, motto, and compartments.

MAKE YOUR OWN

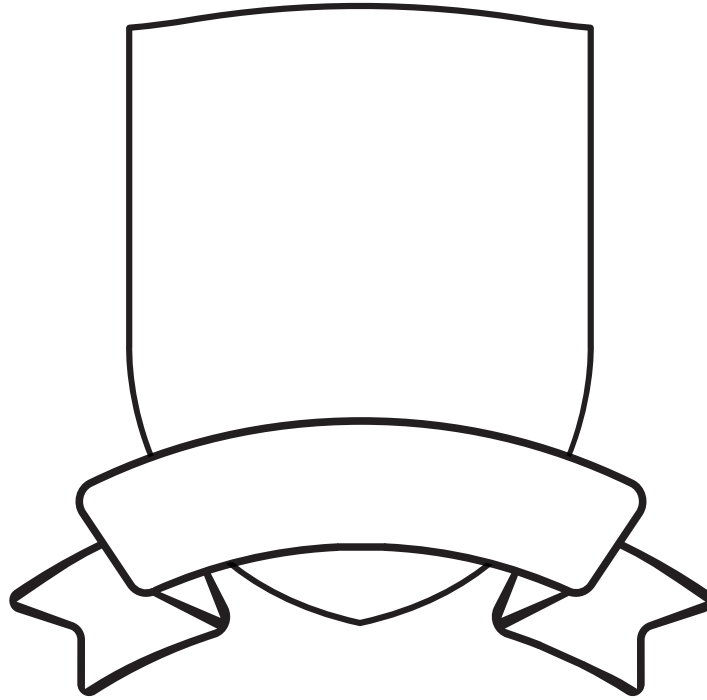
- 1 Draw a shield shape on a piece of paper.



- 2 Review the common parts of a coat of armor.
- 3 Decide which elements you want to include in your version.
- 4 Can you make it specific and meaningful to you? By looking at your coat of armor, what will people learn about you and your family, friends and interests? Do you have a motto that you live by?

<p>Crest symbolic object</p>	<p>Crown or helmet indicates origins</p>	<p>Mantling represents a piece of cloth protecting a knight's armor</p>	<p>Wreath rope typically a rope to represent allegiance</p>
<p>Supporters typically animals or people</p>	<p>Shield central focus of the design</p>	<p>Motto guiding beliefs or ideals</p>	<p>Compartment base design such as a landscape</p>

Coat of Arms



Crest symbolic object	Crown or helmet indicates origins	Mantling represents a piece of cloth protecting a knight's armor	Wreath rope typically a rope to represent allegiance
Supporters typically animals or people	Shield central focus of the design	Motto guiding beliefs or ideals	Compartment base design such as a landscape

Coat of Arms

